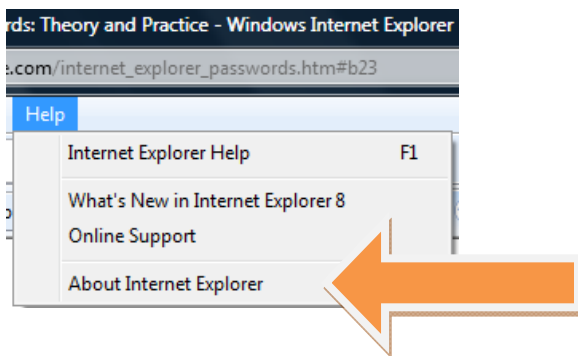
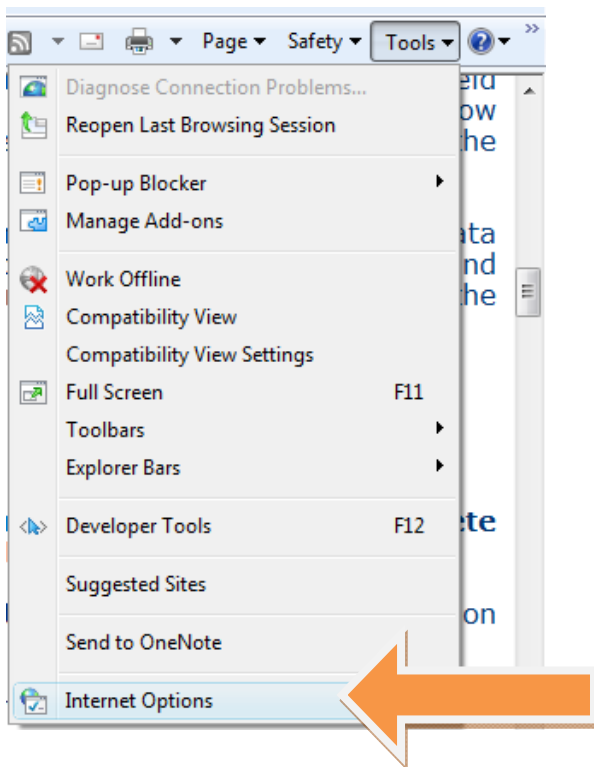


Internet Explorer allows users to manage auto-fill parameters manually, such as passwords, through the Internet Options menu. Here are the 6 easy steps!

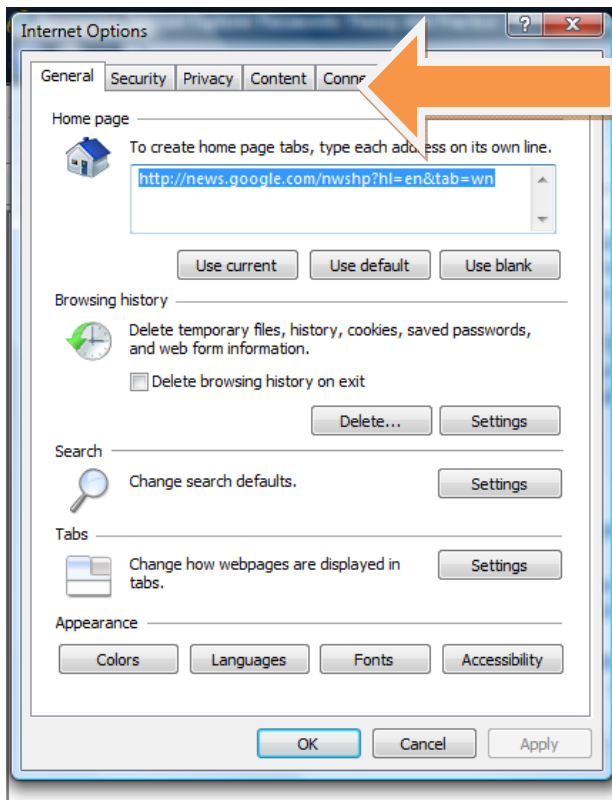
1. Open your Internet Browser.
2. To determine which version you have of Internet Explorer, Click on the Help link from the Menu bar and click on About Internet Explorer. This will show you which version you have on your computer.



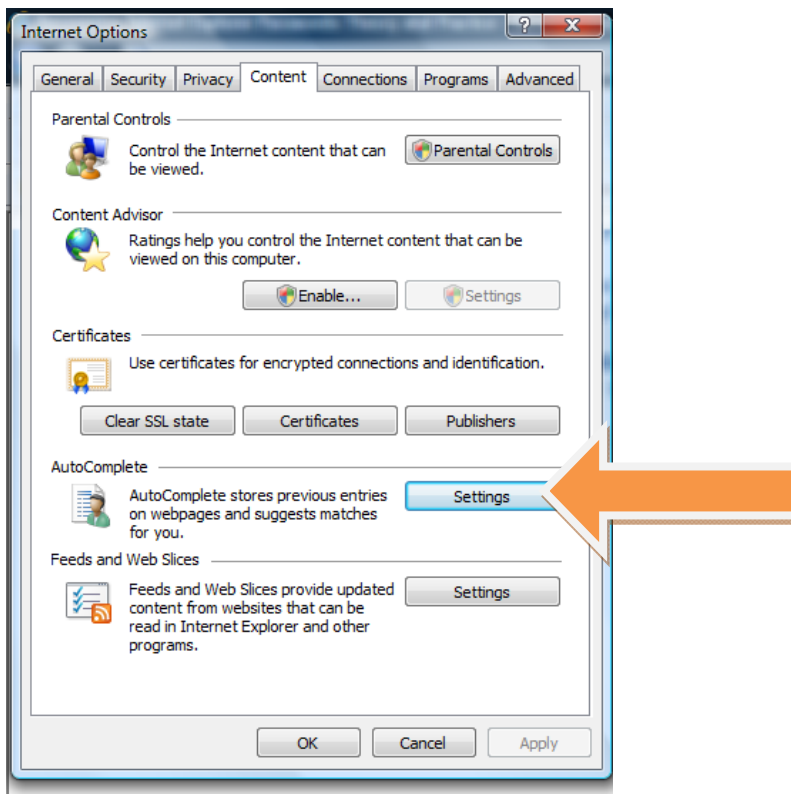
3. To set the auto fill content settings, click Tools from the Menu bar and select Internet Options.



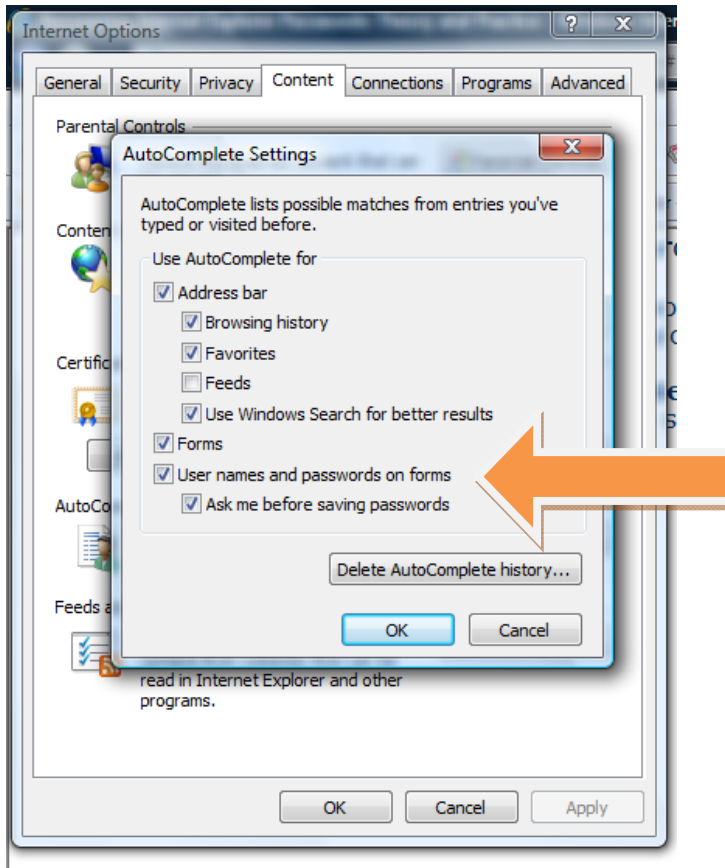
- From the Internet Options window, click on the Content tab.



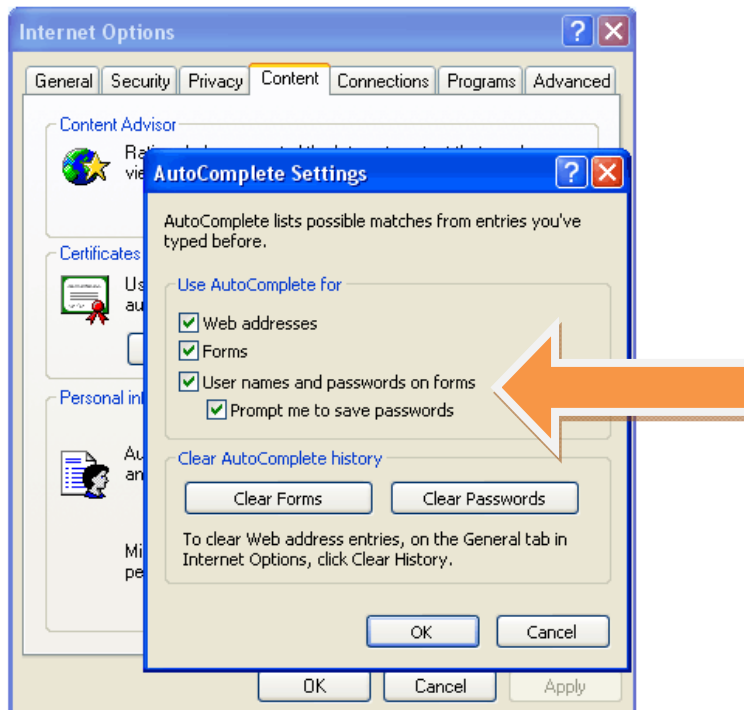
- From the Content tab, click on the AutoComplete Setting button.



6. In the AutoComplete Settings window, make sure that the “User names and passwords on forms” and the “Ask me before saving passwords” options are checked.



NOTE: The Internet Explorer 7 window will look slightly different but will complete the same command:



You're all set! You will now be prompted to allow for passwords being saved on a case by case basis while in Internet Explorer, including your Cal Inspection Bureau dashboard login.